

# DRYCONN®

## WATERPROOF CONNECTORS

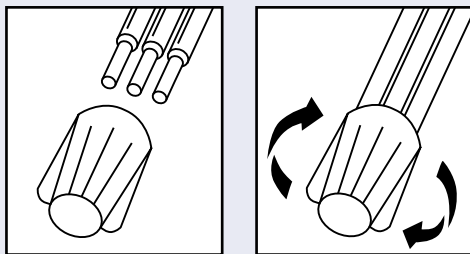
Filled Connectors for Direct Bury Use



### Installation Instructions

**IMPORTANT:** Turn off power before installing or removing connector. Product to be used in accordance with local and national codes.

1. Strip wires 3/4" (19.1mm).
2. Align any frayed strands or conductors.
3. Pre-twisting unnecessary. Place stripped wires together with ends of insulation even.
4. Twist connector onto wires pushing firmly until hand-tight. Do not over torque.
5. Wipe sealant in and around conductors and connector opening while tightening.



U.S. Pat. 5,113,037 and 5,771,578.  
All other trademarks, U.S. & Foreign Patents Apply. All Rights Reserved.

### DryConn® King 9 Blue

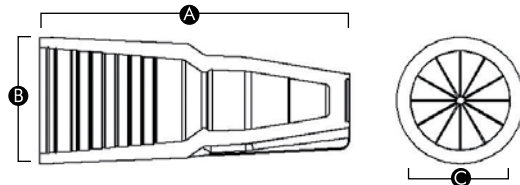
Catalog #	Selling Unit
10999	Bag of 8

### PRODUCT SPECIFICATIONS & MEASUREMENTS

Max. Voltage: 600V max. building wire  
(1000V max. signs or luminaries)  
Connector Size: 2 13/32" x 63/64"  
Wire Type: Copper/Copper  
Wire Range: Min #14/Max #6  
Temperature Rating: 105°C (221°F)  
Silicone Sealant Temperature: -45°F to 400°F  
UL Designation: LDB\*

Measurements (Inches):

A - 2.41  
B - 0.99  
C - 0.78



- UL 486D Listed as a sealed wire connector system. For use in damp, wet, rain tight, submersible and direct bury locations. Not to be used in continuous submersion applications.

### Selected 600V Wire Combinations

1 #6 w/1 #8	2-3 #8	2 #10 w/1-4 #14
2-5 #10	1 #10 w/2-4 #12	3 #10 w/1-3 #14
3-6 #12	1 #10 w/3-5 #14	4 #12 w/1 #14

Contact factory for a complete list of wire combinations at 800.633.0232 or [www.dryconn.com](http://www.dryconn.com).