

DRYCONN®

WATERPROOF CONNECTORS

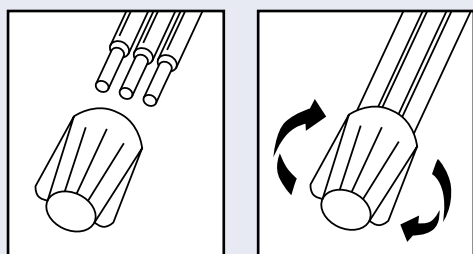
Filled Connectors for Outdoor/Irrigation Use



Installation Instructions

IMPORTANT: Turn off power before installing or removing connector. Product to be used in accordance with local and national codes.

1. Strip #22 - 18 wires 1/2" (12.7mm) and #16-12 wires 3/8" (9.5mm).
2. Align any frayed strands or conductors.
3. Pre-twisting unnecessary. Place stripped wires together with ends of insulation even.
4. Twist connector onto wires pushing firmly until hand-tight. Do not over torque.
5. Wipe sealant in and around conductors and connector opening while tightening. Do not reuse.



U.S. Pat. 5,113,037 and 5,771,578.
All other trademarks, U.S. & Foreign Patents Apply. All Rights Reserved.

DryConn® Black/White

Catalog #	Selling Unit
61135	Bag of 25
61145	Bag of 100
61146	Canister of 150

PRODUCT SPECIFICATIONS & MEASUREMENTS

Max. Voltage: 600V max. building wire
(1000V max. signs or luminaries)

Connector Size: 27/32" x 7/16"

Wire Type: Copper/Copper

Wire Range: Min #22/Max #12

Temperature Rating: 105°C (221°F)

Silicone Sealant Temperature: -45°F to 400°F

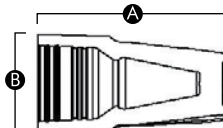
UL Designation: SWP*

Measurements (Inches):

A - 0.85

B - 0.44

C - 0.31



- UL 486D listed as a sealed wire connector system. For use in damp, wet, raintight, and submersible locations. Not to be used in continuous submersion applications.

Selected 600V Wire Combinations

2 #14	1 #14 w/1-3 #18 or #20	3 #16 w/1 #18, #20 or #22
2-5 #18	2 #14 w/1 #18	1 #18 w/1-4 #20
3-5 #20	1 #16 w/1 #18	4 #18 w/1 #20
1 #14 w/1 or 2 #16	2 #16 w/1-2 #18 or #20	4 #20 w/1 #22

Contact factory for a complete list of wire combinations at 800.633.0232 or www.dryconn.com.