

DRYCONN®

WATERPROOF CONNECTORS

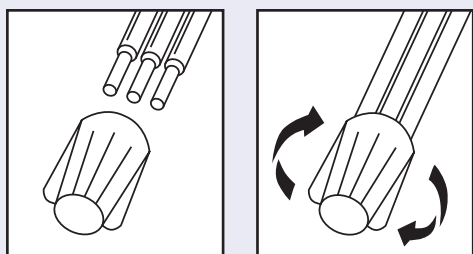
Filled Connectors for Direct Bury Use



Installation Instructions

IMPORTANT: Turn off power before installing or removing connector. Product to be used in accordance with local and national codes.

1. Strip wires 5/8" (15.9mm).
2. Align any frayed strands or conductors.
3. Pre-twisting unnecessary. Place stripped wires together with ends of insulation even.
4. Twist connector onto wires pushing firmly until hand-tight. Do not over torque.
5. Wipe sealant in and around conductors and connector opening while tightening. Do not reuse.



DryConn® King 6 Orange*

Catalog #	Selling Unit
10710	Bag of 10

PRODUCT SPECIFICATIONS & MEASUREMENTS

Max. Voltage: 600V max. building wire
(1000V max. signs or luminaries)

Connector Size: 2" x 13/16"

Wire Type: Copper/Copper

Wire Range: Min #22/Max #8

Temperature Rating: 105°C (221°F)

Silicone Sealant Temperature: -45°F to 400°F

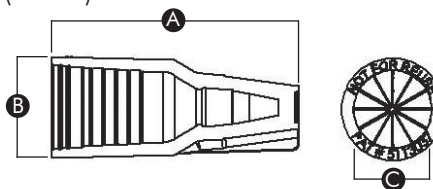
UL Designation: MDB

Measurements (Inches):

A - 2.00

B - 0.81

C - 0.62



* UL 486D Listed as a sealed wire connector system. For use in damp, wet, raintight, direct bury and submersible locations. Not to be used in continuous submersion applications.

Selected 600V Wire Combinations

1-3 #10	1 #10 w/1-3 #14	1 #14 w/3-4 #18
1-4 #12	1 #10 w/1-5 #16	2 #14 w/2-4 #16
2-5 #14	1 #12 w/1-4 #14 or #16	1 #8 w/1 #12
4-6 #16	1 #12 w/2-4 #18	5 #14 w/1 #18
3 #14 w/1-2 #16, #18, #20 or #22	2 #12 w/1-2 #14, #16 or #18	1 #8 w/1-2 #16, #18, #20 or #22
3 #12 w/1 #14		

Contact factory for a complete list of wire combinations at 800.633.0232.

U.S. Pat. 5,771,578. All other trademarks, U.S. and Foreign Patents apply. All Rights Reserved.

*The color orange is a trademark of King Innovation.



50100-76 REV B 01/13

www.kinginnovation.com

(P) 800.633.0232

(F) 636.519.5410