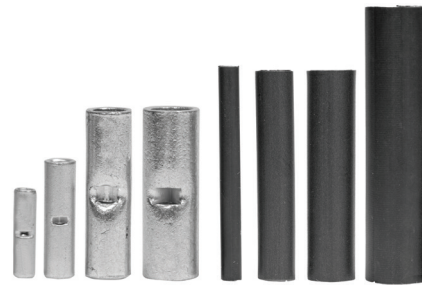


DRYCONN[®]

WATERPROOF CONNECTORS

Great for use with low voltage lighting



Installation Instructions:

IMPORTANT: Turn off power before installing or removing connector. Product to be used in accordance with local and national codes.

KSC-1 (Extra Small)

1. Strip wires 9/32".
2. Slide Heat Shrink tubing over one end of the wire.
3. Hold stripped wires together with ends of insulation even.
4. Align any frayed strands or conductors.
5. Firmly push wire into each port.
6. Crimp connector (two crimps per side) using King Krimper™ - Color Yellow (1.25).
7. Center heat shrink tubing over crimped connector. Beginning from the center of the heat shrink tubing evenly heat until heat shrink is fully compressed around wire.
8. Do not reuse.

KSC-2 (Small)

1. Strip wires 3/8" (If using (1) #18 or (1) #16 per side strip wire 3/4" and fold back on one another).
2. Slide Heat Shrink tubing over one end of the wire.
3. Hold stripped wires together with ends of insulation even.
4. Align any frayed strands or conductors.
5. Firmly push wire into each port.
6. Crimp connector (two crimps per side) using King Krimper™ - Color - Red (5.5). If using (1) #18 use Color - Silver (2).
7. Center heat shrink tubing over crimped connector. Beginning from the center of the heat shrink tubing evenly heat until heat shrink is fully compressed and clear sealing adhesive is visible.
8. Do not reuse.

KSC-3 (Medium)

1. Strip wires 1/2".
2. Slide Heat Shrink tubing over one end of the wire.
3. Hold stripped wires together with ends of insulation even.
4. Align any frayed strands or conductors.
5. Firmly push wire into each port.
6. Crimp connector (two crimps per side) using King Krimper™ - Color - Blue (8.0).
7. Center heat shrink tubing over crimped connector. Beginning from the center of the heat shrink tubing evenly heat until heat shrink is fully compressed and clear sealing adhesive is visible.
8. Do not reuse.

KSC-4 (Large)

1. Strip wires 9/16".
2. Slide Heat Shrink tubing over one end of the wire.
3. Hold stripped wires together with ends of insulation even.
4. Align any frayed strands or conductors.
5. Firmly push wire into each port.
6. Crimp connector (two crimps per side) using King Krimper™ - Color - Green (14.0).
7. Center heat shrink tubing over crimped connector. Beginning from the center of the heat shrink tubing evenly heat until heat shrink is fully compressed and clear sealing adhesive is visible.
8. Do not reuse.

KSC Connectors (King Shrink Crimp)

Catalog #	Description	Selling Unit
72010	KSC-1 (Extra Small)	Bag of 20
72020	KSC-2 (Small)	Bag of 20
72030	KSC-3 (Medium)	Bag of 20
72040	KSC-4 (Large)	Bag of 8

PRODUCT SPECIFICATIONS & MEASUREMENTS

Max. Voltage: 125 Volts

Connector Size: See measurements below

Wire Type: Stranded Copper

Wire Range: Extra Small: Min #18 / Max #14

Small: Min #18 / Max #12

Medium: Min #18 / Max #8

Large: Min #18 / Max #8

CONSTRUCTION

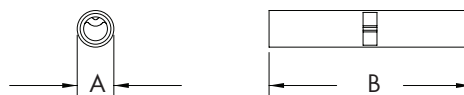
Tubular copper with tin plating

MEASUREMENTS

Extra Small Crimp

A = 0.17"

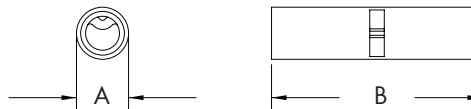
B = 0.64"



Small Crimp

A = 0.21"

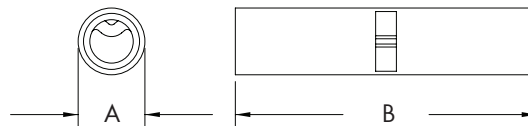
B = 0.78"



Medium Crimp

A = 0.31"

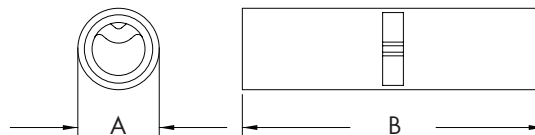
B = 1.13"



Large Crimp

A = 0.38"

B = 1.13"



KSC Connectors (King Shrink Crimp) cont.

- For use in low voltage lighting applications
- Crimp style connector with waterproof heat shrink
- Manufacturer approved for direct bury
- Four sizes available for applications from Min #18 to Max #8
- King Krimper™ tool also available



KSC (King Shrink Crimp) Sleeves

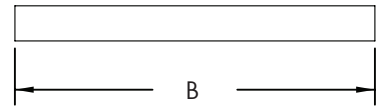
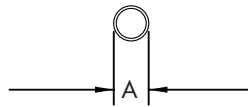


CONSTRUCTION
 Adhesive lined polyolefin

MEASUREMENTS

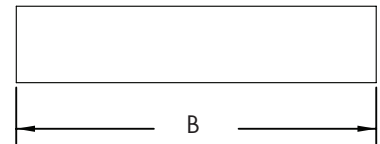
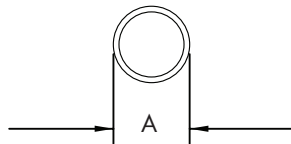
King Shrink Sleeve Small

A = 0.21" B = 3.00"



King Shrink Sleeve Medium

A = 0.46" B = 3.00"



King Shrink Sleeve Large

A = 0.76" B = 4.00"

