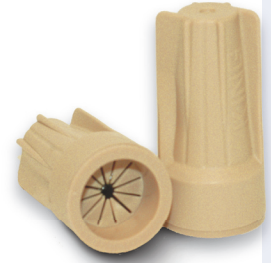


# DRYCONN®

WATERPROOF CONNECTORS

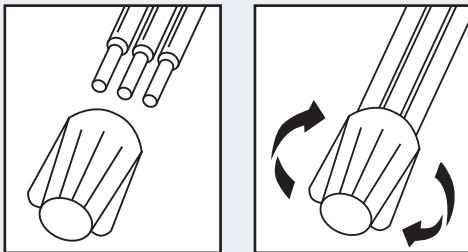
Filled Connectors for Low Voltage Use



## Installation Instructions

**IMPORTANT:** Turn off power before installing or removing connector.  
Product to be used in accordance with local and national codes.

1. Strip wires 1/2".
2. Align frayed strands or conductors.
3. No pre-twisting needed. Hold wires together with ends even. Note: Twist and lead stranded wires slightly.
4. Push wires firmly into connector when starting.
5. Twist connector onto wires pushing firmly until tight. Do not over torque. Do not reuse.



See reverse side for a complete listing of wire combinations.

## DryConn® Tan Low Voltage

Catalog #	Selling Unit
20101	Card of 4
20111	Bag of 15
20122	Bag of 50
20136	Canister of 50

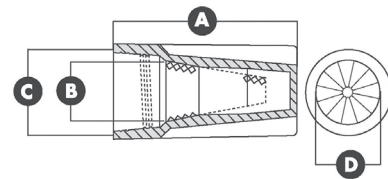
## PRODUCT SPECIFICATIONS & MEASUREMENTS

Max. Voltage: 30V/10 AMP  
Connector Size: 13/16" x 1 9/16"  
Wire Type: Copper/Copper  
Wire Range: Min #22/Max #6  
Temperature Rating: 75°C (167°F)  
Petroleum Sealant: -29°F to 250°F

Measurements (Inches):

A - 1.563 B - 0.813

C - 0.656 D - 0.656



*Suitable for all underground low voltage applications.*

## DryConn® Tan Low Voltage

### Filled Connector for Low Voltage Use

#### 30V/10 AMP

3-6 #22	3 #18 w/1-3 #12, 14 or 16	2 #14 w/1-2 #12
2-6 #18 or 20	3 #18 w/1-2 #10	2 #14 w/1 #8 or 10
1-6 #14 or 16	4 #18 w/1-2 #12, 14 or 16	3 #14 w/1 #10 or 12
1-3 #10 or 12	4 #18 w/1 #10	3 #14 w/2 #12
4 #12 solid	5 #18 w/1 #14 or 16	4 #14 w/1 #12
1 #6	1 #16 w/1-4 #12 or 14	1 #12 w/1 #8 or 10
1 #22 w/2-5 #20	1 #16 w/1-2 #10	2 #12 w/1 #10
1 #22 w/1-5 #16 or 18	2 #16 w/1-4 #14	1 #22 w/1 #16 & 18
2 #22 w/1-4 #16, 18 or 20	2 #16 w/1-3 #12	1 #22 w/1-2 #16 & 1 #20
3 #22 w/1-3 #16, 18 or 20	2 #16 w/1-2 #10	1 #16 w/1 #10 or 12 & 1-2 #14
4 #22 w/1-2 #16, 18 or 20	3 #16 w/1-3 #14	1-2 #16 w/1 #10 & 12
1 #20 w/1-4 #14, 16 or 18	3 #16 w/1-2 #10 or 12	2 #16 w/1-2 #12 & 1 #14
2 #20 w/1-3 #14, 16 or 18	4 #16 w/1-2 #12 or 14	2 #16 w/1 #12 & 2 #14
3 #20 w/1-2 #14, 16 or 18	4 #16 w/1 #10	3 #16 w/1 #10 or 12 & 1 #14
4 #20 w/1-2 #14, 16 or 18	5 #16 w/1 #14	4 #16 w/1 #10 & 12
1 #18 w/1-4 #12 or 14	5 #16 solid w/1 #10 solid	2 #14 w/1 #10 & 1-2 #12
1-2 #18 w/1-2 #10	1 #14 solid w/1-3 #12	2 #14 w/1 #10 & 12
2 #18 w/1-4 #12, 14 or 16	1 #14 w/1-2 #10	

#### Weights and Measures

Shelfpack Qty.	Part #	Wt.	W	H	L	Cube	Master Qty.	Wt.	W	H	L	Cube	UPC 7-19362
6 cards	20101	0.56	3.75	3.25	5.50	0.0388	96	10.10	11.25	6.38	19.38	0.80	20101-6
10 bags	20111	3.00	5.25	5.75	11.75	0.2053	N/A	N/A	N/A	N/A	N/A	N/A	20111-5
1 bag	20122	0.82	6.00	12.00	1.50	0.0625	5	4.60	12.00	9.50	3.50	0.23	20122-1
6 canisters	20136	5.72	3	7	25.5	.31	N/A	N/A	N/A	N/A	N/A	N/A	20136-8

In the chart above, width, height, and length are represented in inches. Weight is represented as pounds.