

DRYCONN®

WATERPROOF CONNECTORS

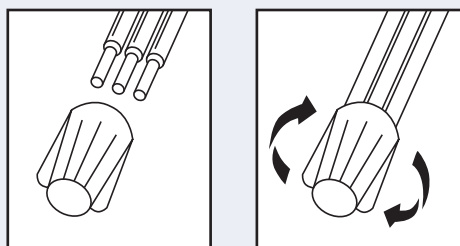
Filled Connectors for Direct Bury Use



Installation Instructions

IMPORTANT: Turn off power before installing or removing connector. Product to be used in accordance with local and national codes.

1. Strip wires 5/8" (15.9mm).
2. Align any frayed strands or conductors.
3. Pre-twisting unnecessary. Place stripped wires together with ends of insulation even.
4. Twist connector onto wires pushing firmly until hand-tight. Do not over torque.
5. Wipe sealant in and around conductors and connector opening while tightening. Do not reuse.



U.S. Pat. 5,113,037 and 5,771,578.
All other trademarks, U.S. & Foreign
Patents Apply. All Rights Reserved.

DryConn® Aqua/Red

Catalog #	Selling Unit
62210	Card of 5
62225	Bag of 20
62235	Bag of 100
62241	Canister of 100
62250	Box of 500

PRODUCT SPECIFICATIONS & MEASUREMENTS

Max. Voltage: 600V max. building wire
(1000V max. signs or luminaries)

Connector Size: 1 19/64" x 43/64"

Wire Type: Copper/Copper

Wire Range: Min #22/Max #8

Temperature Rating: 105°C (221°F)

Silicone Sealant Temperature: -45°F to 400°F

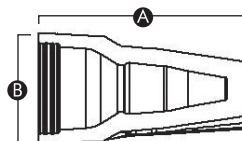
UL Designation: MWP*

Measurements (Inches):

A - 1.30

B - 0.67

C - 0.51



- UL 486D listed as a sealed wire connector system. For use in damp, wet, raintight, and submersible locations. Not to be used in continuous submersion applications.

Selected 600V Wire Combinations

1-3 #12	2 #14 w/2-4 #16	1 #12 w/1-3 #14
2-4 #14	1 #10 w/1-2 #14	1 #12 w/2-4 #18
2-6 #16	1 #10 w/1-3 #16	1 #14 w/3-4 #18
4 #14 w/1 #18	1 #12 w/1-4 #16	2 #12 w/1 #14