

DRYCONN®

WATERPROOF CONNECTORS

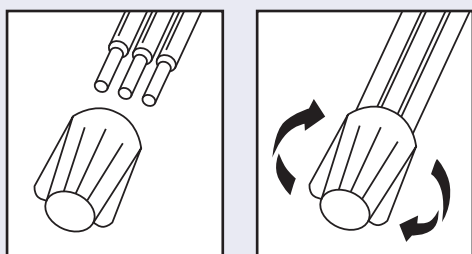
Filled Connectors for Outdoor/Irrigation Use



Installation Instructions

IMPORTANT: Turn off power before installing or removing connector. Product to be used in accordance with local and national codes.

1. Strip #22 - 18 wires 1/2" (12.7mm) and #16-12 wires 3/8" (9.5mm).
2. Align any frayed strands or conductors.
3. Pre-twisting unnecessary. Place stripped wires together with ends of insulation even.
4. Twist connector onto wires pushing firmly until hand-tight. Do not over torque.
5. Wipe sealant in and around conductors and connector opening while tightening. Do not reuse.



U.S. Pat. and 5,771,578. All other trademarks, U.S. and Foreign Patents Apply. All Rights Reserved.

DryConn® Black/White

Catalog #	Selling Unit
61135	Bag of 25
61145	Bag of 100
61146	Canister of 150
61148	Canister of 500

PRODUCT SPECIFICATIONS & MEASUREMENTS

Max. Voltage: 600V max. building wire
(1000V max. signs or luminaries)

Connector Size: 27/32" x 7/16"

Wire Type: Copper/Copper

Wire Range: Min #22/Max #12

Temperature Rating: 105°C (221°F)

Silicone Sealant Temperature: -45°F to 400°F

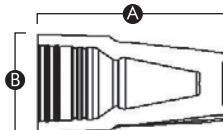
UL Designation: SWP*

Measurements (Inches):

A - 0.85

B - 0.44

C - 0.31



- UL 486D listed as a sealed wire connector system. For use in damp, wet, raintight, and submersible locations. Not to be used in continuous submersion applications.

Selected 600V Wire Combinations

2 #14	1 #14 w/1-3 #18 or #20	3 #16 w/1 #18, #20 or #22
2-5 #18	2 #14 w/1 #18	1 #18 w/1-4 #20
3-5 #20	1 #16 w/1 #18	4 #18 w/1 #20
1 #14 w/1 or 2 #16	2 #16 w/1-2 #18 or #20	4 #20 w/1 #22

Contact factory for a complete list of wire combinations at 800.633.0232.