

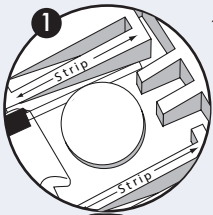
# BLAZING. SnapLOC

Filled Connectors for Outdoor/Electrical Use

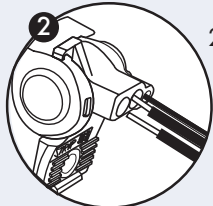
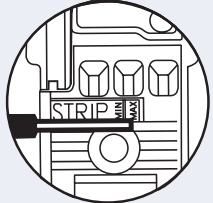


## INSTALLATION INSTRUCTIONS

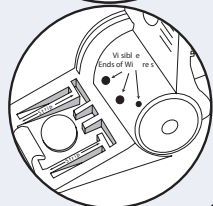
**IMPORTANT:** Turn off power before installing or removing connector. Product to be used in accordance with local and national codes.



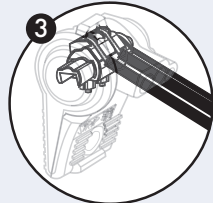
1. Strip wires to 11/16". Use one of the strip guides molded into the connector for reference. Pre-twist stranded wires.



2. Rotate handles fully apart beyond 90 degrees. Insert stripped wires into connector; #12-#14 in the large holes and #16-#20 in the small hole. Exposed ends of wires should be visible through the clear housing on the back.



3. Hold wires in place while squeezing handles together until the latch snaps shut.



Selected 15V Wire Combinations  
For use with stranded combinations.

Large Hole Min #14/Max #12

Small Hole Min #20/Max #16

Contact factory for a complete list of wire combinations at 800.633.0232.

**KING**  
INNOVATION®

U.S. Pat. 7,335,050, D575,738, D575,230, and other patents pending.

50100-119 REV B 06/23

## Blazing™ BLS10 SnapLoc Waterproof Connectors

SKU #	Selling Unit
BLS10	Bag of 10

## PRODUCT SPECIFICATIONS & MEASUREMENTS

Max. Voltage: 15V max. building wire, 10AMPS

Connector Size: 2" x 1.5"

Wire Type: Copper/Copper

Wire Range: Large Hole Min #14/Max #12

Small Hole Min #20/Max #16

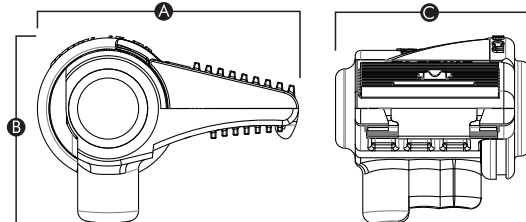
Temperature Rating: 105°C (221°F)

Measurements (Inches):

A - 1.922

B - 1.522

C - 1.355



www.kinginnovation.com

(P) 800.624.4320

(F) 636.519.5410