

DRYCONN®

WATERPROOF CONNECTORS

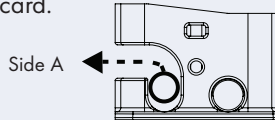
Insulation Displacement Connector
for use with Utility Tracer Applications

**Self Stripping-
No Need to Strip Wires!**

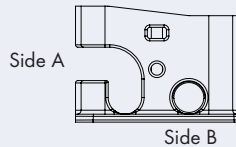


Installation Instructions

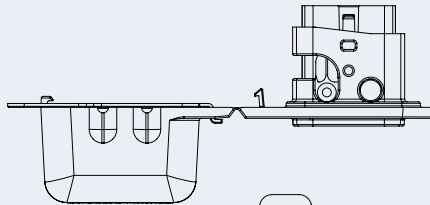
1. Remove plastic tubing from side A and discard.



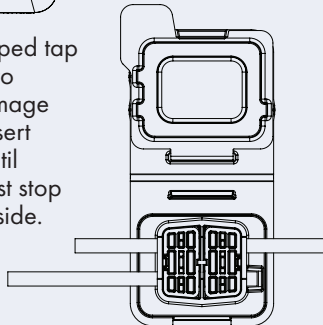
2. Place unstripped main conductor into side A.



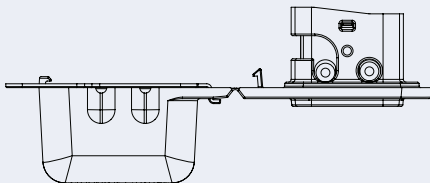
3. Using finger pressure, press blade holders into housing until contact with main conductor is made.



4. Place unstripped tap conductor into side B (see image in step 2). Insert conductor until visible against stop on opposite side.



5. Using 8"-10" Straight Jaw, Groove Joint Pliers, individually press blade holders into housing until blade holder is fully seated in housing. Verify top surface of blade holder is even or just below the top surface of the housing.



6. Remove sealant cover and discard.
7. Close housing, aligning conductors until housing lid is fully closed and latched.
8. Wipe excess sealant around conductors.
9. Do not reuse.

DryConn® IDC Connector Aqua

Catalog #	Selling Unit
98405	Bag of 5

Product Specifications & Measurements

Max. Voltage: 50V

Connector Size: .96" x 1.73" x 1.78"

Wire Range: #14 - 12 Solid/Stranded Copper

#14 - 12 Steel Core Tracer Wire/CCS

Conductor O.D. Range: .121" - .166"

Sealant Temperature Rating: -45°F to 400°F

Construction

Electrical Contacts: Tin plated high conductivity brass

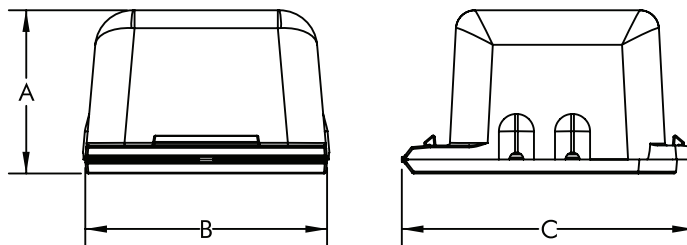
Housing: High impact polypropylene

Sealant: Non-hardening viscous dielectric

Measurements:

A - .96" B - 1.73" C - 1.78"

A - 24.4mm B - 43.9mm C - 45.2mm



KING
INNOVATION®



MADE IN U.S.A.

www.kinginnovation.com
(P) 800.624.4320
(F) 636.519.5410

DryConn® IDC Connector Aqua

Features and benefits

- Waterproof and corrosion proof
- No need to strip conductor
- Install service line without cutting the main line
- Installs with hand tools
- One piece for easy installation
- Installs in one minute or less
- Designed for use with solid/stranded copper and steel core tracer wire with .030" and .045" thick insulation
- Wire range from #14-12 Solid/Stranded Copper
#14-12 Steel Core Tracer Wire/CCS
- High impact housing with user friendly design to prevent cuts or handling discomfort
- Use with low voltage tracer lines under 50 volts
- Pre-filled with sealant
- Approved for direct bury