

DRYCONN®

WATERPROOF CONNECTORS

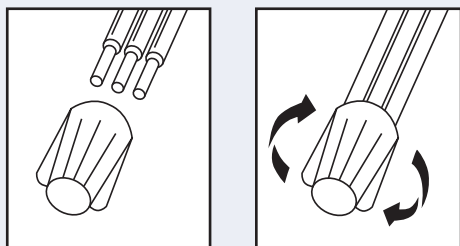
For Use with Utility Tracer Lines



INSTALLATION INSTRUCTIONS

IMPORTANT: Turn off power before installing or removing connector. Product to be used in accordance with local and national codes.

1. Strip wires 5/8" (15.9mm).
2. Align any frayed strands or conductors.
3. Pre-twisting unnecessary. Place stripped wires together with ends of insulation even.
4. Twist connector onto wires pushing firmly until hand-tight. Do not over torque.
5. Wipe sealant in and around conductors and connector opening while tightening. Do not reuse.



Large Waterproof Connectors

Catalog #	Selling Unit
31556	Bag of 10

PRODUCT SPECIFICATIONS & MEASUREMENTS

Max. Voltage: 600V max. building wire
(1000V max. signs or luminaires)

Connector Size: 2" x 13/16"

Wire Type: Copper/Copper

Wire Range: Min #22/Max #8

Temperature Rating: 105°C (221°F)

Sealant Temperature: -45°F to 400°F

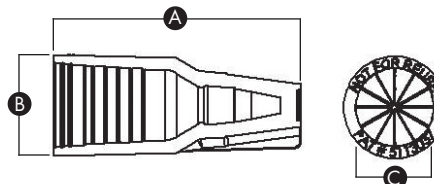
UL Designation: MDB

Measurements (Inches):

A - 2.00

B - 0.81

C - 0.62



FEATURES AND BENEFITS

- Use for utility tracer lines and cathodic protection
- Waterproof and corrosion proof
- One-step® installation saves time and money
- Pre-filled with dielectric sealant that never hardens
- No pre-twisting necessary
- Use with low voltage and line voltage



UL Listed as a Sealed Wire Connector. For use in dry, damp, wet locations below or above grade when used in an enclosure. For use in direct bury applications when operating at 30 volts or less.

Selected 600V Wire Combinations
For use with solid and/or stranded combinations.

1-3 #10	1 #10 w/1-3 #14	1 #14 w/3-4 #18
1-4 #12	1 #10 w/1-5 #16	2 #14 w/2-4 #16
2-5 #14	1 #12 w/1-4 #14 or #16	1 #8 w/1 #12
4-6 #16	1 #12 w/ 2-4 #18	5 #14 w/1 #18
3 #14 w/1-2 #16, #18, #20 or #22	2 #12 w/1-2 #14, #16 or #18	1 #8 w/1-2 #16, #18, #20 or #22
3 #12 w/1 #14		

Contact factory for a complete list of wire combinations at 800.633.0232.



50100-30 REV H 06/23



MADE IN USA

www.kinginnovation.com
(P) 800.624.4320
(F) 636.519.5410