



# Syringe Sucker™

Siphon King Syringe Sucker and Replacement Parts



## Installation Instructions

1. Unscrew Foot Assembly from Siphon King Pump.
2. Screw on Syringe Sucker Adapter in place of the Foot Assembly.
3. Operate Pump normally.
4. When finished with the Syringe Sucker Adapter, replace with Foot Assembly and clean out adapter to ensure long life. If straight barbed fitting becomes damaged, replace with 3/4" NPT thread fitting.



## Siphon King® Syringe Sucker™

Catalog #	Item	Selling Unit
48205	Assembly Foot	6 per box
48215	Syringe Sucker	6 per box
48272	72" Extension/Replacement Hose	6 per box

- For use in small spaces, including golf valve bodies, meter pits, narrow trenches, etc.
- 3/4" barb fitting with 12" pipe attachment
- Easy to replace 12" pipe with any length funny pipe for maximum flexibility and reach
- Attachment fits Siphon King Utility Pumps #48024, #48036, #48072 and #48172 for maximum versatility

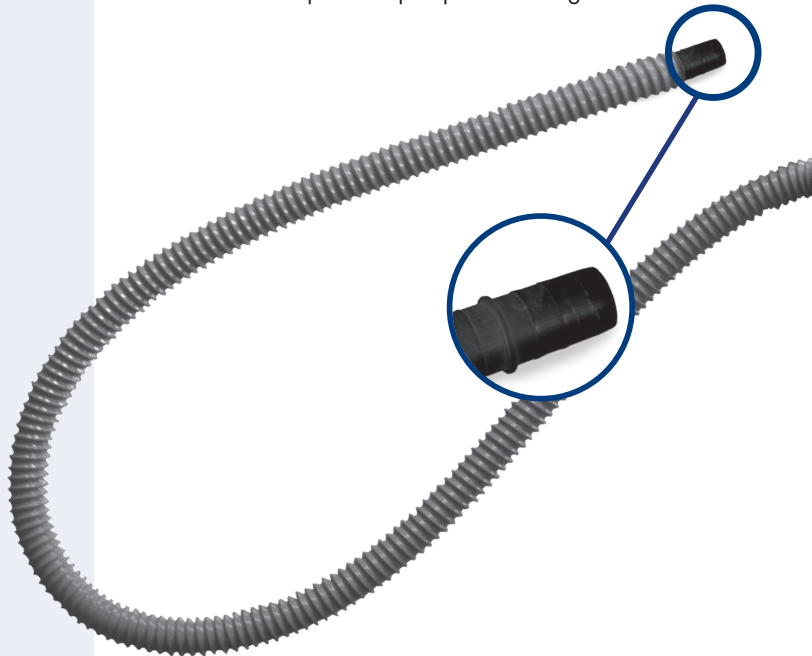




## Siphon King Syringe Sucker and Replacement Parts

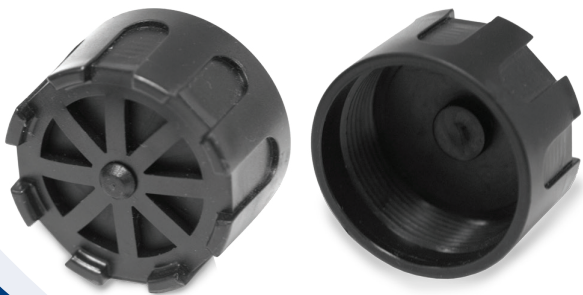
### Siphon King® Extension/Replacement Hose

- Easy to attach to Siphon King Utility Pumps
- 72" flexible hose directs water away from work site
- Additional length is perfect for irrigation valve boxes, meter pits, pipe trenches, and anywhere water accumulates
- Coupler provides hose extension to existing pump hose
- Do not insert coupler into pump outlet fitting



### Siphon King® Assembly Foot

- Attaches to Siphon King Utility Pump to replace old foot
- Screws on easily
- Eliminates problems caused by mud buildup and debris to improve suction



### Installation Instructions

1. For replacement, screw the open end of hose (the end without the coupler) into pump outlet fitting.
2. Coupler is included to extend the hose length.
3. To extend hose, firmly screw coupler clockwise into the end of the existing hose on the pump.
4. Continue to screw both hoses together until they meet the coupler's center.

#### Warning:

Do not insert coupler into pump outlet fitting.

#### Important:

- Disconnect power before placing pump into water
- Flush pump with clean water following use in excessive sandy conditions

### Installation Instructions

1. To replace foot, unscrew current foot counter clockwise from end (bottom) of Siphon King Pump.
2. Check inside bottom of pump shaft for any loose debris and remove.
3. Wipe any dirt, mud or debris buildup from the exposed pump shaft threads.
4. Screw replacement foot clockwise by hand until tight. Do not over tighten.
5. Test pump for leaks and pump suction.

Patent Pending. All other trademarks, U.S. and Foreign Patents Pending apply.  
All Rights Reserved.