

# DRYCONN®

## WATERPROOF CONNECTORS

Great for use with low voltage lighting



### Installation Instructions:

**IMPORTANT:** Turn off power before installing or removing connector. Product to be used in accordance with local and national codes. Do not reuse.

#### KSC-1 Extra Small

1. Strip wires 9/32".
2. Slide Heat Shrink tubing over one end of the wire.
3. Align any frayed strands or conductors.
4. Firmly push wire into each port.
5. Crimp connector (two crimps per side).
6. Center heat shrink tubing over crimped connector. Beginning from the center of the heat shrink tubing evenly heat until heat shrink is fully compressed around wire.

#### KSC-2 Small

1. Strip wires 3/8" (If using (1) #18 or (1) #16 per side strip wire 3/4" and fold back on one another).
2. Slide Heat Shrink tubing over one end of the wire.
3. Hold stripped wires together with ends of insulation even.
4. Align any frayed strands or conductors.
5. Firmly push wire into each port.
6. Crimp connector (two crimps per side).
7. Center heat shrink tubing over crimped connector. Beginning from the center of the heat shrink tubing evenly heat until heat shrink is fully compressed and clear sealing adhesive is visible.

#### KSC-3 Medium

1. Strip wires 1/2". (If using 4-5 #18, 3 #16, 2 #14, 1 #16 w/1 #14, 1 #18 w/2 #16, 2 #18 w/1 #14 or 3 #18 w/1 #16 strip wire 1" and fold back on one another).
2. Slide Heat Shrink tubing over one end of the wire.
3. Hold stripped wires together with ends of insulation even.
4. Align any frayed strands or conductors.
5. Firmly push wire into each port.
6. Crimp connector (two crimps per side) using King Krimper™ - Color - Blue (8.0).
7. Center heat shrink tubing over crimped connector. Beginning from the center of the heat shrink tubing evenly heat until heat shrink is fully compressed and clear sealing adhesive is visible.

#### KSC-4 Large

1. Strip wires 9/16".
2. Slide Heat Shrink tubing over one end of the wire.
3. Hold stripped wires together with ends of insulation even.
4. Align any frayed strands or conductors.
5. Firmly push wire into each port.
6. Crimp connector (two crimps per side).
7. Center heat shrink tubing over crimped connector. Beginning from the center of the heat shrink tubing evenly heat until heat shrink is fully compressed and clear sealing adhesive is visible.

### KSC Connectors (King Shrink Crimp)

Catalog #	Description	Selling Unit
72010	KSC-1 (Extra Small)	Bag of 20
72020	KSC-2 (Small)	Bag of 20
72030	KSC-3 (Medium)	Bag of 20
72040	KSC-4 (Large)	Bag of 8

### PRODUCT SPECIFICATIONS & MEASUREMENTS

Max. Voltage: 125 Volts

Wire Type: For use with Stranded wire only

Wire Range: KSC-1 Extra Small: Min #22 / Max #16

KSC-2 Small: Min #18 / Max #12

KSC-3 Medium: Min #18 / Max #8

KSC-4 Large: Min #18 / Max #8

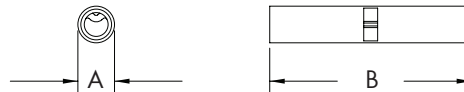
### CONSTRUCTION

Tubular copper with tin plating

### MEASUREMENTS

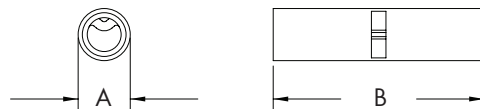
#### KSC-1 Crimp Extra Small

A = 0.13" B = 0.63"



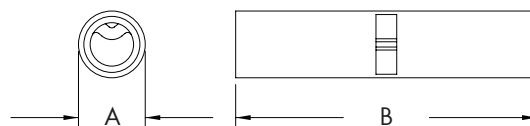
#### KSC-2 Crimp Small

A = 0.21" B = 0.78"



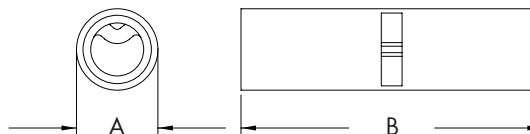
#### KSC-3 Crimp Medium

A = 0.31" B = 1.13"



#### KSC-4 Crimp Large

A = 0.38" B = 1.13"



Great for use with low voltage lighting

### KSC Connectors (King Shrink Crimp)

- For use in landscape lighting or wherever an in-line electrical splice is required
- Crimp style connector with waterproof heat shrink
- Use with King Krimper tool (#46550) and Mini-Torch (#BHST-200)



### KSC Sleeves (King Shrink Crimp)



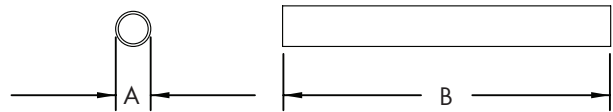
#### CONSTRUCTION

Adhesive lined polyolefin

#### MEASUREMENTS

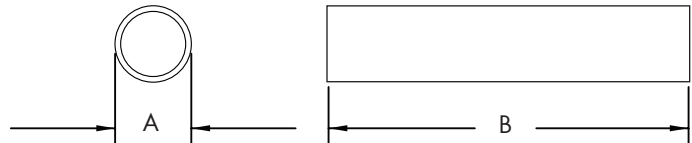
**KSC-1 Sleeve Extra Small**

A = 0.45"      B = 2.00"



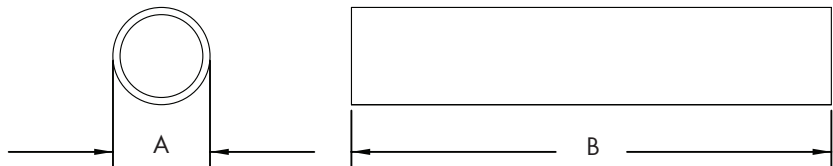
**KSC-2 Sleeve Small and KSC-3 Sleeve Medium**

A = 0.54"      B = 3.00"



**KSC-4 Sleeve Large**

A = 0.84"      B = 4.00"



### KSC Connector Chart (King Shrink Crimp)

KSC Connector	King Krimper Size
KSC-1	1.25mm
KSC-2	5.5mm, if using 1#18 use 2mm
KSC-3	8mm
KSC-4	14mm



Crimp KSC connectors using the ratcheting King Krimper tool (#46550).